



GMT MONTHLY MEMBERSHIP PROGRESS REPORT

Results as of: 4/30/2019

Multiple District 8

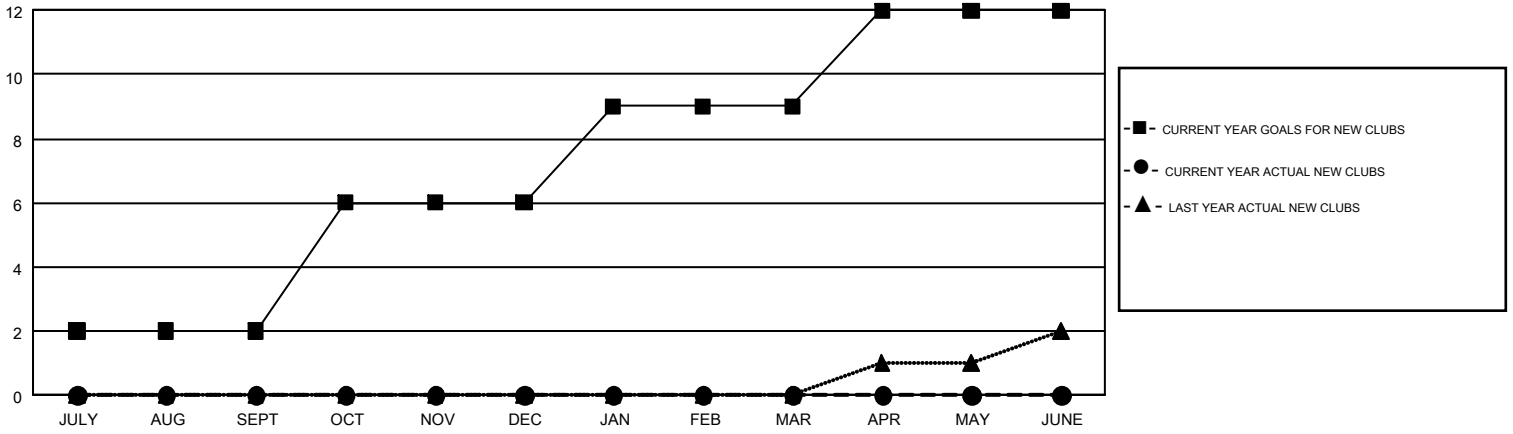
LOCATION: LOUISIANA

GMT: GREGORY GILLIAM

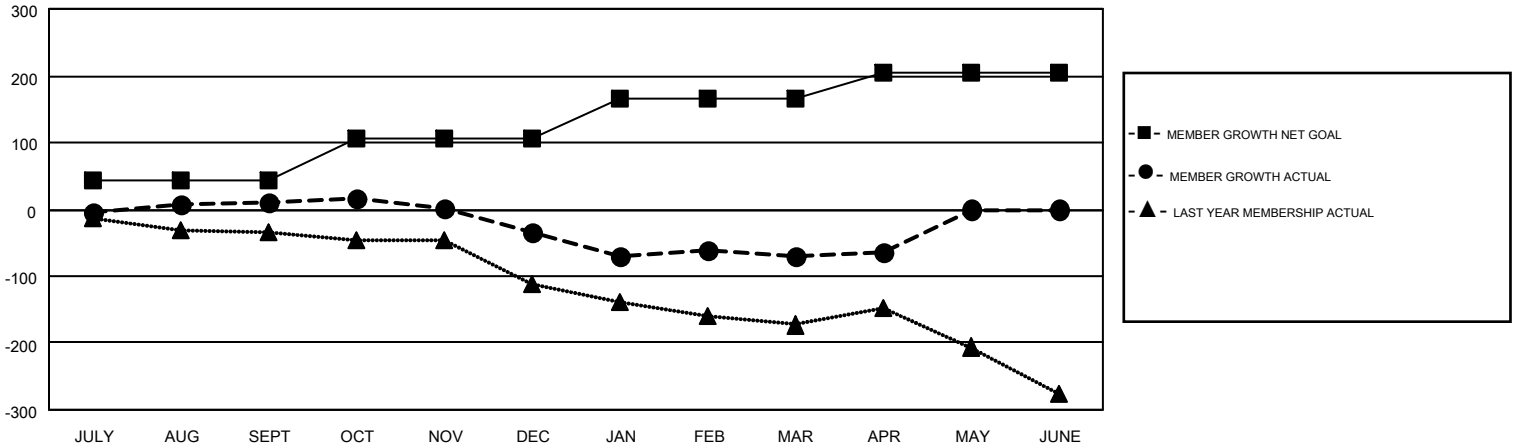
GMT CA 1

| Clubs | | | | Members | | | |
|-----------------------|---------------|-----------|---------------|-----------------------|------------------------|----------------------|--|
| RESULTS FOR 2018-2019 | | | | RESULTS FOR 2018-2019 | | | |
| QUARTER | NEW CLUB GOAL | NEW CLUBS | DROPPED CLUBS | QUARTER | MEMBER GROWTH NET GOAL | MEMBER GROWTH ACTUAL | DROPPED MEMBERS ACTUAL (including transfers) |
| JULY/AUG/SEPT | 2 | 0 | 0 | JULY/AUG/SEPT | 42 | 137 | 106 |
| OCT/NOV/DEC | 4 | 0 | 1 | OCT/NOV/DEC | 64 | 63 | 106 |
| JAN/FEB/MAR | 3 | 0 | 0 | JAN/FEB/MAR | 60 | 84 | 110 |
| APR/MAY/JUNE | 3 | 0 | 0 | APR/MAY/JUNE | 39 | 45 | 39 |

GOALS AND ACTUAL NEW CLUBS CUMULATIVE



GOALS AND ACTUAL MEMBERS CUMULATIVE



| | | | |
|------------------------|---|-------------------------------------|----------------|
| DROPPED CLUBS: 1 | 77 CLUBS OF 146 ADDED 1 OR MORE NEW MEMBERS | <u>GENDER DISTRIBUTION</u> | |
| | | MALE | 2,730 (67.73%) |
| | | FEMALE | 1,301 (32.27%) |
| <u>DROPPED MEMBERS</u> | | TOTAL FAMILY UNIT MEMBERS 685 | |
| DECEASED | 45 | FAMILY MEMBERS PAYING HALF DUES 357 | |
| CLUB CANCELLED | 0 | | |
| OTHER | 316 | | |
| TOTAL | 361 | | |

[CLICK HERE FOR CUMULATIVE MEMBERSHIP DATA](#)